

## Native Trees

SPECIAL ORDER ONLY

Order by late spring / early summer for fall delivery.

### *Fraxinus latifolia*

OREGON ASH

\$55.00 /lb



Growing 40–80 ft tall, this ash tree thrives in moist to saturated soils and tolerates seasonal flooding. Broad, compound leaves provide dense summer shade, turning yellow in fall. Its winged seeds support wildlife, and its deep root system helps stabilize streambanks and improve watershed resilience. An excellent choice for large-scale habitat restoration and riparian buffer plantings. Seeds volunteer easily.



### *Crataegus douglasii*

BLACK HAWTHORN

\$65.00 /lb

### *Crataegus columbiana*

COLUMBIA HAWTHORN

\$65.00 /lb



A native tree well-suited for riparian corridors, wetlands, and woodland edges. Growing 15–30 ft tall, it thrives in moist to seasonally wet soils and tolerates periodic flooding. Clusters of white spring flowers provide nectar for pollinators, followed by dark purple to black berries that are highly valued

by birds and wildlife. Has shorter thorns than the Columbia Hawthorn and berries are smaller.



Growing 10–25 ft tall, this native tree thrives in moist to well-drained soils and tolerates seasonal drought once established. Showy clusters of white spring flowers provide valuable nectar for pollinators, followed by bright red berries that persist into fall and winter, offering important food for birds and wildlife. Notable for its

long, sharp thorns, it also provides excellent protective cover for nesting birds and wildlife habitat plantings.

### *Salix sitchensis*

SITKA WILLOW

Order cuttings from November—March



This native willow is mostly found near water sources. It grows best in sunny locations but will tolerate some shade. Growing 6–25 ft tall, its dense growth habit and extensive root system provide excellent erosion control and bank stabilization.

**Planting Instructions-** Insert cuttings directly into moist soil with the buds facing up, burying at least two-thirds of the cutting (leave 1–2 buds above ground). Plant in consistently moist to saturated soil, and ensure good soil contact. Supplemental watering may be needed until roots establish if soil dries out.

\$0.50 /cutting (12–24 inches)

## Seed For Native Wetland & Upland Plants Of The West



Wetland Restoration Is Our Specialty

SPRING 2026

[www.RiverRefugeSeed.com](http://www.RiverRefugeSeed.com) / 541-466-5309 / [RiverRefugeSeed@gmail.com](mailto:RiverRefugeSeed@gmail.com)

River Refuge Seed Company  
26366 Gap Road  
Brownsville, Oregon 97327

Pg	BOTANICAL NAME	COMMON NAME	Pg	BOTANICAL NAME	COMMON NAME
9	<i>Achillea millefolium</i>	COMMON YARROW	10	<i>Grindelia integrifolia</i>	PUGET SOUND GUMWEED
3	<i>Agrostis exarata</i>	SPIKE BENTGRASS	10	<i>Helianthus annuus</i>	SUNFLOWER
9	<i>Alisma triviale</i>	WATER PLANTAIN	10	<i>Heracleum maximum</i>	COW PARSNIP
3	<i>Alopecurus aequalis</i>	SHORTAWN FOXTAIL	5	<i>Hordeum brachyantherum</i>	MEADOW BARLEY
9	<i>Asclepias speciosa</i>	SHOWY MILKWEED	10	<i>Iris tenax</i>	OREGON IRIS
3	<i>Beckmannia syzigachne</i>	AMERICAN SLOUGHGRASS	7	<i>Juncus acuminatus</i>	TAPERTIP RUSH
9	<i>Bidens cernua</i>	NODDING BEGGARTICK	7	<i>Juncus bolanderi</i>	BOLANDER'S RUSH
7	<i>Bolboschoenus maritimus</i>	ALKALI BULRUSH	7	<i>Juncus bufonius</i>	TOAD RUSH
3	<i>Bromus carinatus</i>	CALIFORNIA BROME	7	<i>Juncus effusus</i>	COMMON RUSH
3	<i>Bromus sitchensis</i>	SITKA BROME	8	<i>Juncus ensifolius</i>	DAGGER LEAF RUSH
9	<i>Camassia leichtlinii</i>	LARGE CAMAS	8	<i>Juncus oxymeres</i>	POINTED RUSH
9	<i>Camassia quamash</i>	SMALL CAMAS	8	<i>Juncus tenuis</i>	SLENDER RUSH
6	<i>Carex densa</i>	DENSE SEDGE	5	<i>Leersia oryzoides</i>	RICE CUTGRASS
6	<i>Carex feta</i>	GREENSHEATH SEDGE	10	<i>Lomatium dissectum</i>	FERNLEAF BUISCUIT ROOT
6	<i>Carex leporina</i>	OVAL BROOM SEDGE	10	<i>Lomatium nudicaule</i>	BARESTEM BUISCUIT ROOT
6	<i>Carex rostrata</i>	BEAKED SEDGE	11	<i>Lupinus bicolor</i>	MINIATURE LUPINE
6	<i>Carex stipata</i>	AWL-FRUITED SEDGE	11	<i>Lupinus polyphllus</i>	BIG LEAF LUPINE
6	<i>Carex unilateralis</i>	ONE-SIDED/LATERAL SEDGE	11	<i>Lupinus rivularis</i>	RIVERBANK LUPINE
9	<i>Chenopodium album</i>	LAMBSQUARTERS / FAT HEN	11	<i>Mimulus guttatus</i>	MONKEY FLOWER
9	<i>Clarkia amoena</i>	FAREWELL TO SPRING	11	<i>Plagiobothrys figuratus</i>	FRAGRANT POPCORN FLOWER
3	<i>Danthonia californica</i>	CALIFORNIA OATGRASS	11	<i>Plagiobothrys scouleri</i>	SCOULER'S POPCORN FLOWER
4	<i>Deschampsia cespitosa</i>	TUFTED HAIRGRASS	11	<i>Plectritis congesta</i>	SEABLUSH
4	<i>Deschampsia danthoniodes</i>	ANNUAL HAIRGRASS	11	<i>Polygonum pensylvanicum</i>	PENNSYLVANIA SMART-WEED
4	<i>Deschampsia elongata</i>	SLENDER HAIRGRASS	11	<i>Prunella vulgaris var. lanceolata</i>	SELF HEAL
9	<i>Downingia elegans</i>	ELEGANT CALICOFLOWER	12	<i>Ranunculus occidentalis</i>	WESTERN BUTTERCUP
7	<i>Eleocharis ovata</i>	OVATE SPIKERUSH	12	<i>Sagittaria latifolia</i>	WAPATO
7	<i>Eleocharis palustris</i>	CREEPING SPIKERUSH	12	<i>Sanguisorba annua</i>	ANNUAL BURNET
4	<i>Elymus glaucus</i>	BLUE WILD RYE	8	<i>Schoenoplectus acutus</i>	HARDSTEM BULRUSH
10	<i>Epilobium densiflorum</i>	DENSE SPIKED PRIMROSE	8	<i>Schoenoplectus tabernaemontani</i>	SOFTSTEM BULRUSH
10	<i>Eriophyllum lanatum</i>	OREGON SUNSHINE	8	<i>Scirpus microcarpus</i>	SMALL-FRUITED BULRUSH
4	<i>Festuca roemerii</i>	ROEMER'S FESCUE	12	<i>Sisyrinchium idahoense</i>	BLUE-EYED GRASS
4	<i>Festuca rubra ssp. juncea</i> "Molate"	NATIVE RED FESCUE	12	<i>Sparganium emersum</i>	BUR-REED
10	<i>Geum macrophyllum</i>	LARGE-LEAF AVENS	12	<i>Tellima grandiflora</i>	FRINGECUPS
5	<i>Glyceria occidentalis</i>	WESTERN MANNAGRASS	5	<i>Zizania palustris</i>	WILD RICE
15	NATIVE TREES	OREGON ASH, SITKA WILLOW	15	NATIVE TREES	BLACK & COLUMBIA HAWTHORN

## Native Seed Mixes

### BIO SWALE MIX #8

This mix is recommended by erosion control specialists and conservationists. Plant 15-25 lbs/acre.

- 15% *Beckmannia syzigachne*
- 10% *Hordeum brachyantherum*
- 10% *Bromus carinatus*
- 10% *Elymus glaucus*
- 10% *Agrostis exarata*
- 10% *Deschampsia cespitosa*
- 10% *Festuca romeri*
- 5% *Alopecurus aequalis*
- 5% *Eleocharis palustris*
- 5% *Deschampsia elongata*
- 5% *Carex unilateralis*
- 2.5% *Juncus tenuis*
- 2.5% *Juncus bufonius*

**SPECIAL MIX PRICE \$29.96 /lb**

### NATIVE UPLAND GRASS MIX #9

This blend is perfect for the riparian, upland or wet prairie restoration. It creates perfect nesting cover with its mix of grasses, some creeping to fill in and some forming crowns. Plant 15-25 lbs./acre.

- 30% *Elymus glaucus*
- 25% *Bromus carinatus*
- 10% *Hordeum brachyantherum*
- 10% *Festuca romeri*
- 10% *Deschampsia elongata*
- 5% *Agrostis exarata*
- 5% *Deschampsia cespitosa*
- 5% *Festuca rubra rubra*

**SPECIAL MIX PRICE \$13.95 /lb**

### NATIVE WETLAND GRASS MIX #10

(A SPECIAL MIX THAT ATTRACTS WATERFOWL)

This blend of grasses can be submerged for the winter. They will begin to grow as the water recedes in the spring. They all do well in very poor soil and can also stand a droughty summer. As these grassy fields reflood in the fall and winter, ducks feed on the shattered seed and invertebrates. Plant 15-25 lbs/acre.

- 40% *Glyceria occidentalis*
- 30% *Beckmannia syzigachne*
- 20% *Hordeum brachyantherum*
- 10% *Alopecurus aequalis*

**SPECIAL MIX PRICE \$19.95 /lb**

### MOIST SOIL SEDGE & RUSH MIX #11

A native seed mix designed for wet meadows, marsh edges, and riparian restoration. The mix establishes quickly in consistently moist soils, forming dense clumps and mats that provide excellent erosion control, habitat for waterfowl and pollinators, and structural diversity in restored wetlands.

- 35% *Carex stipata*
- 15% *Carex densa*
- 10% *Carex feta*
- 10% *Carex leporina*
- 10% *Juncus bufonius*
- 10% *Juncus effusus*
- 10% *Juncus tenuis*

**SPECIAL MIX PRICE \$149.50 /lb**

### NATIVE MOIST SOIL MANAGEMENT MIX #12

For attracting waterfowl.

- 25% *Glyceria occidentalis*
- 25% *Alisma triviale*
- 15% *Polygonum pensylvanicum*
- 10% *Beckmannia syzigachne*
- 5% *Alopecurus aequalis*
- 5% *Eleocharis palustris*
- 5% *Hordem brochyamtherum*
- 4% *Eleocharis ovata*
- 3% *Leersia oryzoides*
- 3% *Schoenoplectus tabernaemontani*

**SPECIAL MIX PRICE \$34.75 /lb**

# Native Seed Mixes

## NATIVE WETLAND MARSH MIX #1

This mix is perfect for seasonal wetlands where water recedes to marshy conditions, spring to summer. Plant 10-15 lbs/acre.

- 60% *Alisma triviale*
- 20% *Glyceria occidentalis*
- 10% *Alopecurus aequalis*
- 5% *Sagittaria latifolia*
- 5% *Leersia oryzoides*

**SPECIAL MIX PRICE \$29.95/lb**

## NATIVE MOIST SOIL FLOWER MIX #2

This mix is perfect for seasonal wetlands where water recedes to marshy conditions, spring to summer. Plant 8-10 lbs/acre.

- 30% *Plagiobothrys figuratus*
- 30% *Polygonum pensylvanicum*
- 15% *Epilobium densiflorum*
- 10% *Camassia leichtlinii*
- 5% *Sagittaria latifolia*
- 5% *Grindelia integrifolia*
- 5% *Downingia elegans*

**SPECIAL MIX PRICE \$69.99/lb**

## NATIVE WETLAND MEDIUM TO SHALLOW WATER MIX #3

This is the ideal mix for spring water depth of 6"-18" that recedes in June to August. Plant 12-18 lbs/acre.

- 30% *Alisma triviale*
- 20% *Beckmannia syzigachne*
- 20% *Eleocharis palustris*
- 15% *Glyceria occidentalis*
- 10% *Alopecurus aequalis*
- 5% *Leersia oryzoides*

**SPECIAL MIX PRICE \$39.99/lb**

## NATIVE WETLAND DEEP WATER MIX #4

This mix is great for deeper water areas. It works well in areas with winter water depth of 3'-4' and summer levels of 6"-12" or even drying in August/September. Plant 10-15 lbs/acre.

- 60% *Alisma triviale*
- 20% *Sparganium eurycarpum*
- 20% *Schoenoplectus tabernaemontani*

**SPECIAL MIX PRICE \$49.99/lb**

## NATIVE FLOWER / POLLINATOR MIX #5

- 30% *Plagiobothrys figuratus*
- 15% *Lupinus rivularis*
- 10% *Clarkia amoena*
- 10% *Eriophyllum lanatum*
- 10% *Polygonum pensylvanicum*
- 5% *Lupinus polyphyllus*
- 5% *Camassia leichtlinii*
- 5% *Prunella vulgaris var. lanceolata*
- 5% *Achillea millefolium*
- 3% *Heracleum maximum*
- 2% *Asclepias speciosa*

**SPECIAL MIX PRICE \$74.99/lb**

## WOODLAND FLOWER MIX #6

This mix of two beautiful native forbs thrives in wet meadows, prairies and partially shaded woodlands and is loved by pollinators. Plant 8-10 lb per acre.

- 70% *Camassia leichtlinii*
- 30% *Tellima grandiflora*

**SPECIAL MIX PRICE \$199.99/lb**



# About River Refuge Seed

## In loving memory of Dave Rogers Founder, Owner and Architect of River Refuge Seed Company

Dave's lifelong passion for waterfowl, inspired both him and his wife Kathy to become strong advocates for wetland conservation. In the 1980s, they began exploring ways to protect and enhance wetlands while maintaining a productive farm. Their search led them to an Oregon State University professor who suggested Oregon had the potential to successfully grow wild rice. Embracing the challenge, Dave constructed several ponds and planted wild rice—quickly discovering it was a favorite among geese and ducks. This success sparked further experimentation with additional crops and more ponds.

River Refuge Seed went on to become the first farm in Oregon to commercially grow wild rice. A few years after the ponds were established, Dave began to notice a variety of native wetland plants volunteering in the marshy ground of the rice fields. With the increasing interest in wetland restoration, both privately and publicly, he recognized a clear opportunity to supply native wetland seed to a developing market. What began as a hobby farm gradually evolved into a thriving family business.

Over the course of 30 years, Dave designed and built more than 150 ponds—ranging in size from 1/4 - 30 acres—encompassing nearly 700 acres in the Mid-Willamette Valley. When the farm was first established, the nearest major waterfowl flyway lay 20 miles west of the property. Dave envisioned drawing those birds to his land, and through patient stewardship and thoughtful management, that vision ultimately became a reality. Today, these wetlands support a diverse array of native wetland plants, provide feed and nesting habitat for thousands of birds, and serve as a critical stopover for migrating waterfowl.



Dave Rogers  
1943 - 2026

We are proud to be a multigenerational, family-run farm dedicated to carrying on Dave's legacy. Our goal is to provide a quality product while providing great customer service. Our website offers many helpful resources but we're always happy to answer your questions by a good old fashion phone call.

## Native Grasses

### *Agrostis exarata*

SPIKE BENTGRASS

A native perennial grass found in wet areas but can stand very dry summer conditions. It is good for riparian areas, open savannah or wet prairies. It is a



vigorous grower and strong reseeder! Grows from 8-30 inches. Best planted in fall. 5,600,000 seeds per lb. Plant 2-5 lbs/acre.

\$27.70 /lb

### *Alopecurus aequalis*

SHORTAWN FOXTAIL

Found throughout the United States, this perennial native grass is great for seasonal wetlands as it will withstand long periods of submersion as well as drought.



Waterfowl feed on the seed and forage the rhizome root system for Invertebrates. Grows 5-15 inches. 1,300,000 seeds per lb. Plant 6-8 lbs/acre.

\$25.95 /lb

### *Beckmannia syzigachne*

AMERICAN SLOUGHGRASS

An annual or short-lived perennial native grass that is an aggressive reseeder. It is used widely in wetland restorations and as plantings for waterfowl.



Grows to 4 feet. An excellent choice for moist soil restoration, pond margins, and seasonal wetland seed mixes. 240,000 seeds per lb. Plant 12-15 lbs/acre.

\$19.50 /lb

### *Bromus carinatus*

CALIFORNIA BROME

A native perennial bunchgrass well-suited for meadow, prairie, and open woodland restoration. Growing 2-4 ft tall, it thrives in well-drained to moderately moist soils



and tolerates seasonal drought once established. It establishes quickly, provides forage for wildlife and livestock, and helps stabilize soil in restoration and erosion control plantings. 60,000-82,000 seeds per lb. Plant 15-30 lbs/acre.

\$7.90 /lb

### *Bromus sitchensis*

SITKA BROME

Sitka brome is a shade tolerant native that can grow 2 to 5 feet tall. It is a fast growing bunchgrass that is relatively long-lived. It thrives in moist to well-



drained soils and tolerates cool, maritime conditions. 122,000 seeds per lb. Plant 15-30 lbs/acre.

\$9.90 /lb

### *Danthonia californica*

CALIFORNIA OATGRASS

A perennial native grass found in oak savannah to poorly drained riparian areas. It tolerates stresses from wet to drought and produces high crowns which are



great for wildlife habitat. Grows 1-3 feet. Fall plant. Requires 60 days of cold stratification. Generally, sprouts in the spring. 400,000 seeds per lb. Plant 10-20 lbs/acre.

\$46.70 /lb

## Native Wetland & Upland Flowers / Forbs

### *Ranunculus occidentalis*

WESTERN BUTTERCUP

A native perennial wildflower suited for wet meadow and riparian restoration. It thrives in moist to seasonally wet soils but also tolerates summer drying once established. Blooms in spring, providing early-season nectar for pollinators. Seeds will volunteer year after year.



\$249.00 /lb

### *Sagittaria latifolia*

WAPATO OR ARROWHEAD

This native forb, with its starchy tubers, were once an important food source for Native Americans. It grows quickly and spreads rapidly in wet marshes and shallow ponds. Will sprout in up



to 12 inches of water. Waterfowl devour the seed head, foliage and tubers. A little seed goes a long way! Grows 2-3 feet.

\$144.50 /lb

### *Sanguisorba annua*

ANNUAL BURNET

A native annual forb well-suited for meadow and upland restoration. Growing 1-3 ft tall, it thrives in moist to moderately well-drained soils and tolerates



seasonal drying. An excellent choice for pollinator habitat and transitional wet-to-upland sites.

\$99.25 /lb

### *Sisyrinchium idahoense*

BLUE-EYED GRASS

Unlike the name suggests, this native perennial is part of the iris family. It grows in open woodlands, moist meadows and river banks and can get up to 18 inches



tall. It thrives in moist to well-drained soils and tolerates seasonal drying once established. Plants will multiply each year and are easy to divide.

\$205.00 /lb

### *Sparganium emersum*

BUR-REED

A perennial native emergent that grows well in seasonally or permanently flooded areas. Ducks love the seed. The entire plant is a favorite of deer, geese



and muskrats. Grows 8-20 inches. Needs cold-warm-cold-warm stratification to sprout. Due to a complicated stratification it may not sprout until 2nd or 3rd year.

\$125.50 /lb

### *Tellima grandiflora*

FRINGECUPS

A native perennial well-suited for woodland and riparian restoration. Growing 1-3 ft tall, it thrives in moist, well-drained soils and performs especially well in partial to full shade. Airy spikes



of delicate, fringed green to pinkish flowers bloom in spring, adding texture and early-season interest. An excellent choice for shaded understories, forest edges, and moist woodland plantings.

\$439.00 /lb

# Native Wetland & Upland Flowers / Forbs

## *Lupinus bicolor*

MINIATURE LUPINE

Smaller than most lupines, this native annual only grows to about 6 to 16 inches. It readily reseeds and flowers March through July. This is a good one to include in your wet prairie or upland mixes.



\$84.50 /lb

## *Lupinus polyphyllus*

BIG LEAF LUPINE

The big leaf lupine is a native perennial legume that grows to 4 ft tall. It will grow in wet prairie to droughty uplands. This is the true native, not the Russells variety. As a nitrogen-fixing plant, it enriches soil and nearby plants.



\$69.50 /lb

## *Lupinus rivularis*

RIVERBANK LUPINE

The riverbank lupine is a native perennial in the legume family that grows to 3 ft with blue and white flowers. It will grow in almost any soil but prefers wet and well drained. As a nitrogen-fixing plant, it enriches soil and nearby plants.



\$49.50 /lb

## *Mimulus guttatus*

MONKEY FLOWER

This native has vibrant yellow blooms and can be either a perennial or annual depending on the climate. It spreads mostly by rhizomes and does well in both full sun and shade.



\$50.00 /oz

## *Plagiobothrys figuratus*

FRAGRANT POPCORN FLOWER

A native annual that begins sprouting as water recedes from wetland and blooms mid-May to early July. Prefers moist soil and will reseed readily. Grows 6-12 inches tall and is more robust than scouler's popcorn flower.



\$89.50 /lb

## *Plagiobothrys scouleri*

SCOULER'S POPCORN FLOWER

A native annual that begins sprouting as water recedes from wetland and blooms mid-May to early July. Prefers moist soil and will reseed readily. Similar to fragrant popcorn flower but smaller and more compact, only growing 1-8 inches tall.



\$86.50 /lb

## *Plectritis congesta*

SEABLUSH

A native annual wildflower well-suited for meadow and upland restoration. It thrives in moist to well-drained soils and tolerates seasonal drying. Re-seeds itself and is easy to grow.



\$149.00 /lb

## *Polygon pensylvanicum*

PENNSYLVANIA SMARTWEED

A native, reseeding annual that grows in a few inches of water and thrives in areas where water recedes in late spring.



\*\*\* According to the USDA this species is native to the lower 48 states of the USA. \*\*\*

\$19.50 /lb

## *Prunella vulgaris* var. lanceolata

SELF HEAL

A native, fibrous-rooted, perennial that grows from short rhizomes making it ideal for erosion control. It generally stays green all summer without watering and will flower even when mowed fairly short.



\$69.90 /lb

# Native Grasses

## *Deschampsia cespitosa*

TUFTED HAIRGRASS

A fine leaved, native perennial bunchgrass. It is often used in wetland, riparian and upland restoration. Growing 2-4 ft tall, it thrives in moist to saturated soils but also tolerates seasonal drying once established. Fall planting is recommended. Benefits from 30 to 60 days of cold stratification to break dormancy. 1,300,000 seeds per lb. Plant 1-5 lbs/acre.



\$22.50 /lb

## *Deschampsia danthonioides*

ANNUAL HAIRGRASS

This is a quick low growing, native annual grass that can be used as a ground cover in restoration projects. There is no seed dormancy and germinates readily on moist soil. A great choice for early cover, erosion control, and increasing species diversity in prairie and upland plantings. 900,000 seeds per lb. Plant 2-7 lbs/acre.



\$12.50 /lb

## *Deschampsia elongata*

SLENDER HAIRGRASS

A fine leaved native perennial bunchgrass that grows moderately fast. This species has potential as a nurse crop for slower establishing, longer lived species like California oatgrass. It is also a good re-seeder and useful for erosion control. 2,300,000 seeds per lb. Plant 2-7 lbs/acre.



\$11.75 /lb

## *Elymus glaucus*

BLUE WILDRYE

A native short lived perennial grass. It is a drought tolerant upland species that is often used as a matrix in grass mixes for restoration. Establishes quickly, provides forage and habitat for wildlife, and helps stabilize soil in restoration and erosion control projects. 134,000 seeds per lb. Plant 15-30 lbs/acre.



\$13.75 /lb

## *Festuca roemerii*

ROEMER'S FESCUE

A native perennial bunchgrass growing 1-3 ft tall. It thrives in well-drained soils and full sun, tolerating seasonal drought and poor soils once established. Fine-textured, blue-green foliage forms long-lived clumps that provide structure, wildlife habitat, and excellent soil stabilization. 500,000 seeds per lb. Plant 5-8 lbs/acre.



\$26.75 /lb

## *Festuca rubra* ssp. *juncea* "Molate"

NATIVE RED FESCUE

A fine-textured, creeping native perennial grass growing 1-2 ft tall. Usually selected for its adaptability and uniform growth. An excellent choice to be included in upland restoration mixes. Its dense, fibrous root system provides excellent soil stabilization, making it ideal for erosion control, meadow restoration, and low-maintenance native lawns. 245,000 seeds per lb. Plant 5-8 lbs/acre.



\$9.25 /lb

## Native Grasses

### *Glyceria occidentalis*

WESTERN MANNAGRASS

A native perennial that grows best in shallow water that is either seasonal or year round. It produces an abundance of seed consumed by waterfowl. The



vegetation is also grazed by mammals. Grows 1-3 feet. Shallow plant. 125,000 seeds per lb. Plant 15-20 lbs/acre. \*\*\* According to the USDA this species is native to the lower 48 states of the USA. \*\*\*

\$32.50/lb

### *Hordeum brachyantherum*

MEADOW BARLEY

A native perennial grass that grows well in a wetland, wet prairie or riparian environment. It is a bunchgrass that will tolerate total inundation for months and grow



vigorously as water recedes. It will also tolerate some alkalinity. This seed is a must for most wetland restoration. 100,000 seeds per lb. Plant 15-30 lbs/acre.

\$17.65/lb

### *Leersia oryzoides*

RICE CUTGRASS

A perennial emergent grass that grows well in seasonally flooded or permanent shallow ponds. Works well for soil stabilization. The seeds are eaten by waterfowl and the roots by wetland mam-



mals. Grows 3-5 feet. 500,000 seeds per lb. Plant 6-8 lbs/acre.

\$145.00/lb

### *Zizania palustris*

WILD RICE



Wild Rice is a **native** aquatic grass that grows in water 8-36" deep. It readily reseeds itself. It can mature in permanently flooded ponds or seasonal wetlands, provided there is water into July. Plant 50-100 lbs/acre.

\*\*\* According to the USDA this species is native to the lower 48 states of the USA. \*\*\*

Spring \$6.95/lb

Fall \$6.25/lb

## Native Grass Mixes

(See page 14 for more details)

- **BIO SWALE MIX #8**
- **NATIVE UPLAND GRASS MIX #9**
- **NATIVE WETLAND GRASS MIX #10**

## Native Wetland & Upland Flowers / Forbs

### *Epilobium densiflorum*

DENSE SPIKED PRIMROSE



A native annual wildflower that thrives in saturated to seasonally wet soils and tolerates summer drying as sites recede. Grows 1-3 feet tall and has slender, sturdy stems. An excellent choice for full sun and transitional wetland areas.

\$64.50/lb

### *Eriophyllum lanatum*

OREGON SUNSHINE



Thrives in the Willamette Valley of Oregon, with its 40" of yearly rain, to the high desert of Eastern Washington, Oregon, Idaho & Northern California. Very drought resistant due to having a deep taproot. Grows in dense clumps.

\$169.50/lb

### *Geum macrophyllum*

LARGE-LEAF AVENS



A native perennial well-suited for woodland, riparian, and moist meadow restoration. Growing 1-3 ft tall, it thrives in moist to moderately well-drained soils and tolerates partial shade. Seeds readily cling to clothes & fur for natural dispersal.

\$139.00/lb

### *Grindelia integrifolia*

PUGET SOUND GUMWEED



A perennial native forb that grows 6-30 inches tall. Leaves are covered with a resinous substance making the plant very sticky. Grows in wet prairie and early drying vernal pools. Thrives in clay soils.

\$120.00/lb

### *Helianthus annuus*

SUNFLOWER



Provides feed and cover for doves, quail, and songbirds. Grows well on both sides of the Cascades. Tolerates some frost and is drought resistant. Fall plant for best results.

\$35.50/lb

### *Heracleum maximum*

COW PARSNIP



A native biennial or short-lived perennial that grows up to 8 feet tall. Makes a good forage species for larger animals. It grows best in partly shady locations but can withstand full sun provided soil conditions are moist and loamy.

\$149.50/lb

### *Iris tenax*

OREGON IRIS



A native perennial well-suited for prairie, meadow, and upland restoration. It blooms in the spring, providing early nectar for pollinators. Spreads gradually by short rhizomes, forming increasingly dense clumps over time.

\$185.00/lb

### *Lomatium dissectum*

FERNLEAF BISCUITROOT



A long-lived perennial that grows 2 to 5 feet tall. It is most commonly found on dry, rocky hillsides amongst native grasses. Once it is established, it can tolerate droughty conditions.

\$145.00/lb

### *Lomatium nudicaule*

BARESTEM BISCUITROOT



This native perennial is an important spring and summer food for livestock and wildlife. It grows well in dry, open habitats and gets up to 2 feet tall. An excellent choice for full sun sites and dry-land restoration seed mixes.

\$160.00/lb

# Native Wetland & Upland Flowers / Forbs

## *Achillea millefolium*

COMMON YARROW

A native perennial herb that spreads aggressively by rhizomes and self-seeding. It prefers dry or moist soil that is well drained and can tolerate



d r o u g h t . Grows up to 2 feet tall. When mowed, it can be used as a low maintenance lawn.

\$47.90 /lb

## *Alisma triviale*

AMERICAN WATER PLANTAIN

A perennial native aquatic plant that grows in both shallow and deep marshes. It is often used in wetland restorations. Waterfowl readily feed



on the seeds and plants. Its fibrous roots stabilize soil and create habitat for aquatic invertebrates.

\$19.90 /lb

## *Asclepias speciosa*

SHOWY MILKWEED

A native perennial forb that is very important to the Monarch butterfly. They cannot survive without it because their larvae will only feed on



milkweed plants. It thrives in well-drained to moderately moist soils and tolerates seasonal drought once established.

\$249.00 /lb

## *Camassia leichtlinii*

LARGE CAMAS

A native perennial bulb growing 2-4 ft tall, well adapted to wet meadows, prairies, and shaded woodlands. 1st-year plants appear



grass-like, with flowering typically occurring in the 2nd or 3rd year. Once established, camas readily reseeds itself.

\$119.50 /lb

## *Camassia quamash*

SMALL CAMAS

A native perennial bulb that grows 8 - 23 inches. It thrives in wet meadows, prairies and shaded woodlands. It typically takes 2 to 3 years, after



planting, for flowering to occur. Usually blooms a few weeks before large camas in early spring.

\$199.50 /lb

## *Clarkia amoena*

FAREWELL TO SPRING

A native annual wildflower ideal for meadow, prairie, and upland restoration. Growing 1-3 ft tall, it thrives in well-drained soils and full sun, tolerating



seasonal summer drought. An excellent choice for adding vibrant color and diversity to native mixes.

\$74.50 /lb

## *Chenopodium album*

LAMBSQUARTERS / FAT HEN

An annual of the goosefoot family. It grows in riparian and transitional areas and produces tens of thousands of seeds per plant that are enjoyed



by upland birds and song birds.

\*\*\* According to the USDA this species is native to the lower 48 states of the USA. \*\*\*

\$14.10 /lb

## *Bidens cernua*

NODDING BEGGARTICK

A native annual wildflower that thrives in saturated soils and shallow standing water up to 2-6 inches deep. It blooms from late summer



into fall, providing important late-season nectar for pollinators.

\$94.50 /lb

## *Downingia elegans*

ELEGANT CALICOFLOWER

A native annual wildflower ideal for seasonal wetlands, vernal pools, and moist meadow restoration. Growing 4-12 inches tall, it thrives in saturated



spring soils and tolerates drying as sites recede in summer.

\$210.00 /lb

# Native Sedges

## *Carex densa*

DENSE SEDGE

A native, clump-forming sedge ideal for wetland and riparian restoration, thriving in moist to wet soils. Its dense foliage stabilizes soil and provides



habitat for wildlife. Produces long stems with grass-like leaves. Best planted in the fall.

\$160.00 /lb

## *Carex feta*

GREENSHEATH SEDGE

A native sedge ideal for wetland and riparian restoration. Naturally occurring in marshes, wet prairies, and along stream banks, it tolerates prolonged saturation and seasonal flooding. Closely resembling *Carex leporina*, except this species matures slightly earlier and seeds are more prone to shattering once ripe. Best planted in the fall.



\$195.00 /lb

## *Carex leporina*

OVAL BROOM SEDGE

A native, clump-forming wetland sedge ideal for moist meadows, pond edges, and wet prairie restoration. It establishes well in wet to seasonally wet



soils and adds ecological value to restoration plantings. Very similar to *Carex feta* but produces seed heads that retain their seeds longer and mature a few weeks later. Best planted in the fall.

\$195.00 /lb

## *Carex rostrata*

BEAKED SEDGE

With its rhizomatous root system, this grass-like native is great at forming sod, making it useful for wetland and riparian restoration. It can be found growing in swamps, marshes and the edges of streams and ponds. Grows 1 to 4 feet tall, providing great cover for wildlife. Best planted in the fall.



\$165.00 /lb

## *Carex stipata*

AWL FRUITED SEDGE

A native, clump-forming sedge ideal for wetland, marsh, and pond-edge restoration. Reaching 1-2 ft tall, it thrives in saturated to consistently moist soils,



forming dense foliage that helps stabilize soil and provides cover and food for wildlife. Best planted in the fall.

\$175.00 /lb

## *Carex unilateralis*

ONE-SIDED SEDGE / LATERAL SEDGE

A native, clump-forming sedge well-suited for wetland and riparian restoration. Growing 1-2 ft tall, it thrives in moist to wet soils, forming dense foliage that



stabilizes soil and provides habitat and cover for wildlife. Best planted in the fall.

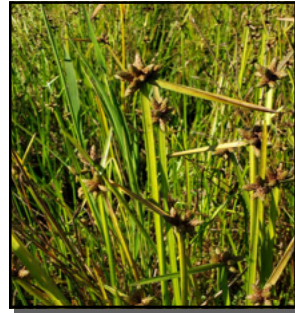
\$109.00 /lb

# Native Rushes

## *Bolboschoenus maritimus*

ALKALI BULRUSH

This native perennial is ideal for saline or alkaline sites, handling a pH of up to 9.0 but can also grow in fresh water. It can tolerate periods of drought and total inundation. Its robust rhizomatous roots help stabilize soil and prevent erosion, while dense stands provide cover and habitat for waterfowl and other wildlife.



\$39.50 /lb

## *Eleocharis ovata*

OVATE SPIKERUSH

A native perennial rush growing 6–18 inches, well-suited for wet meadows, marsh edges, and seasonally saturated soils. Unlike creeping spikerush, it grows in discrete clumps rather than aggressively spreading mats, providing structural diversity in restoration plantings. Its fibrous roots stabilize soil, and seeds support wetland wildlife.



\$99.50 /lb

## *Eleocharis palustris*

CREEPING SPIKERUSH / COMMON SPIKERUSH

A native perennial rush growing 6–24 inches, valued in western marshes for its ecological importance. Seeds and spikes provide food for waterfowl, while rhizomatous roots allow it to spread and form dense mats over time, offering excellent cover.

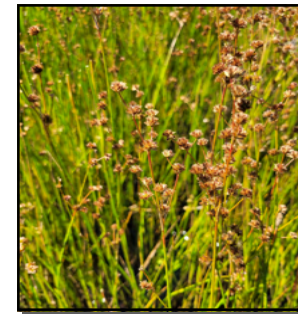


\$95.50 /lb

## *Juncus acuminatus*

TAPERTIP RUSH

A native, clump-forming rush suited for wetland and pond-edge restoration. Growing 1.5–3 ft tall, it thrives in moist to saturated soils and can tolerate shallow standing water up to approximately 2–4 inches deep. It spreads easily by rhizomes.

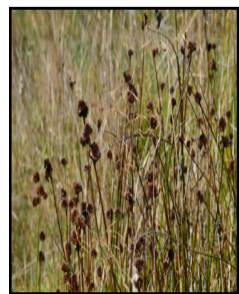


\$189.00 /lb

## *Juncus bolanderi*

BOLANDER'S RUSH

A native perennial rush that thrives in consistently moist to saturated soils, forming dense clumps. Plants multiply each year and can be easily divided for propagation.

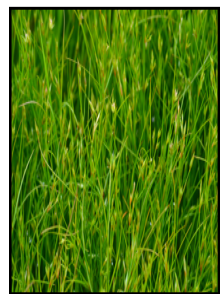


\$199.00 /lb

## *Juncus bufonius*

TOAD RUSH

A grass-like, annual native that grows 2-12 inches. Grows June through August. Planted in a mix with perennials, it gives showy first year growth. Because it dies back early, it doesn't outcompete them.



\$130.00 /lb

## *Juncus effusus*

COMMON RUSH

A native perennial with round hollow stems. It grows 8-40 inches tall. Grows well in standing water, wet prairies and meadows. An essential component of wetland restoration, the clumpy growth is great for wildlife habitat.



\$149.00 /lb

# Native Rushes

## *Juncus ensifolius*

DAGGER LEAF RUSH / SWORDLEAF RUSH

A native perennial rush ideal for wetland, riparian, and pond-edge restoration. Growing 1–2 ft tall, it thrives in moist to saturated soils and shallow standing water up to 2–4 inches deep. Its stiff, flat, sword-shaped leaves form upright clumps that stabilize soil and provide cover for wildlife. Seeds and shoots are eaten by waterfowl and small mammals.



\$199.00 /lb

## *Juncus oxymiris*

POINTED RUSH

This native perennial rush grows up to 3 ft tall. It thrives in saturated soils and shallow standing water, forming dense clumps that help stabilize soil and provide cover for waterfowl and small wildlife. Has iris-like leaves, similar to dagger leaf rush.



\$195.00 /lb

## *Juncus tenuis*

SLENDER RUSH

A native perennial rush adaptable to a wide range of conditions, from moist meadows and riparian edges to compacted soils along paths and disturbed sites. Growing 1–2 ft tall, it forms fine-textured clumps of slender stems that tolerate seasonal drying. Its fibrous roots help stabilize soil, making it useful for erosion control and low-maintenance restoration plantings.



\$134.50 /lb

## *Schoenoplectus acutus*

HARDSTEM BULRUSH (SCIRPUS ACUTUS)

A tall, native perennial ideal for wetland, shoreline, and pond restoration. Growing 6–12 ft tall, it thrives in saturated soils and standing water up to several feet deep. Its stout, upright stems spread by vigorous rhizomes, forming dense colonies that provide excellent erosion control and critical habitat for waterfowl, muskrats, and other wetland wildlife.



\$89.50 /lb

## *Schoenoplectus tabernaemontani*

SOFTSTEM BULRUSH (SCIRPUS VALIDUS)

A tall, native perennial ideal for wetland and shoreline restoration. Growing 6–10 ft tall, it thrives in saturated soils and standing water up to several feet deep. Softer and more flexible than hardstem bulrush, it spreads by rhizomes to form dense colonies that provide excellent erosion control and critical habitat for waterfowl and aquatic wildlife.



\$89.50 /lb

## *Scirpus microcarpus*

SMALL FRUITED BULRUSH

A native perennial bulrush well-suited for wetland and riparian restoration. Growing 3–6 ft tall, it thrives in saturated soils and shallow standing water along streambanks, marshes, and pond margins. Broad leaves and arching stems form dense colonies from creeping rhizomes, providing strong erosion control and valuable cover for wildlife.



\$135.00 /lb