

Wildlife we have enjoyed on the farm over the years.



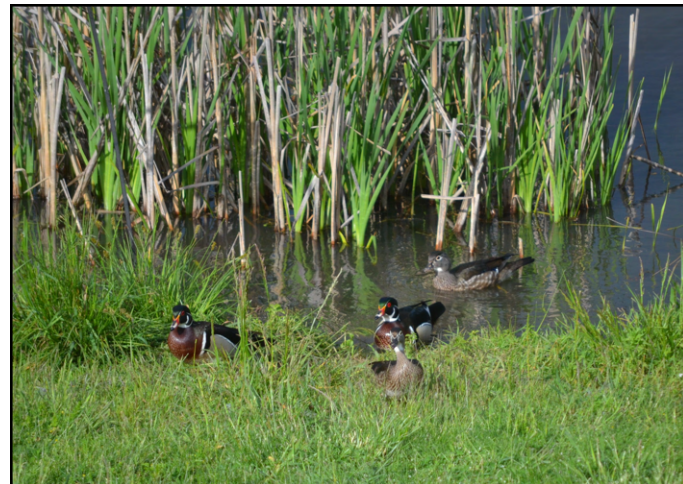
HEN MALLARD & JUVENILE GREEN HERON



EGRETS



MALLARD & HER DUCKLINGS



WOOD DUCKS



BALD EAGLES



JUVENILE CANADA GOOSE

Seed For Native Wetland & Upland Plants Of The West



Wetland Restoration Is Our Specialty

SPRING 2024

www.RiverRefugeSeed.com / 541-466-5309 / RiverRefugeSeed@gmail.com

River Refuge Seed Company
26366 Gap Road
Brownsville, Oregon 97327

	BOTANICAL NAME	COMMON NAME
pg. 10	<i>Achillea millefolium</i>	COMMON YARROW
pg. 3	<i>Agrostis exarata</i>	SPIKE BENTGRASS
pg. 9	<i>Alisma triviale</i>	WATER PLANTAIN
pg. 3	<i>Alopecurus aequalis</i>	SHORTAWN FOXTAIL
pg. 10	<i>Asclepias speciosa</i>	SHOWY MILKWEED
pg. 3	<i>Beckmannia syzigachne</i>	AMERICAN SLOUGHGRASS
pg. 7	<i>Bolboschoenus maritimus</i>	ALKALI BULRUSH
pg. 3	<i>Bromus carinatus</i>	CALIFORNIA BROME
pg. 3	<i>Bromus sitchensis</i>	SITKA BROME
pg. 10	<i>Camassia leichtlinii</i>	LARGE CAMAS
pg. 10	<i>Camassia quamash</i>	SMALL CAMAS
pg. 6	<i>Carex densa</i>	DENSE SEDGE
pg. 6	<i>Carex feta</i>	GREENSHEATH SEDGE
pg. 6	<i>Carex microptera</i>	SMALLWING SEDGE
pg. 6	<i>Carex rostrata</i>	BEAKED SEDGE
pg. 6	<i>Carex stipata</i>	AWL-FRUITED SEDGE
pg. 6	<i>Carex unilateralis</i>	ONE-SIDED OR LATERAL SEDGE
pg. 9	<i>Chenopodium album</i>	LAMBSQUARTERS / FAT HEN
pg. 10	<i>Clarkia amoena</i>	FAREWELL TO SPRING
pg. 3	<i>Danthonia californica</i>	CALIFORNIA OATGRASS
pg. 4	<i>Deschampsia cespitosa</i>	TUFTED HAIRGRASS
pg. 4	<i>Deschampsia danthoniodes</i>	ANNUAL HAIRGRASS
pg. 4	<i>Deschampsia elongata</i>	SLENDER HAIRGRASS
pg. 10	<i>Downingia elegans</i>	ELEGANT CALICOFLOWER
pg. 7	<i>Eleocharis ovata</i>	OVATE SPIKERUSH
pg. 7	<i>Eleocharis palustris</i>	CREEPING SPIKERUSH
pg. 4	<i>Elymus glaucus</i>	BLUE WILDRYE
pg. 11	<i>Epilobium densiflorum</i>	DENSE SPIKED PRIMROSE
pg. 11	<i>Eriophyllum lanatum</i>	OREGON SUNSHINE
pg. 4	<i>Festuca roemerii</i>	ROEMER'S FESCUE
pg. 4	<i>Festuca rubra rubra</i>	RED FESCUE
pg. 11	<i>Geum macrophyllum</i>	LARGE-LEAF AVENS
pg. 5	<i>Glyceria occidentalis</i>	WESTERN MANNAGRASS
pg. 11	<i>Grindelia integrifolia</i>	PUGET SOUND GUMWEED
pg. 11	<i>Helianthus annuus</i>	SUNFLOWER
pg. 9	<i>Heracleum maximum</i>	COW PARSNIP
pg. 5	<i>Hordeum brachyantherum</i>	MEADOW BARLEY
pg. 7	<i>Juncus bolanderi</i>	BOLANDER'S RUSH
pg. 7	<i>Juncus bufonius</i>	TOAD RUSH
pg. 7	<i>Juncus effusus</i>	COMMON RUSH
pg. 8	<i>Juncus ensifolius</i>	DAGGER LEAF RUSH
pg. 8	<i>Juncus oxymers</i>	POINTED RUSH
pg. 8	<i>Juncus tenuis</i>	SLENDER RUSH
pg. 5	<i>Leersia oryzoides</i>	RICE CUTGRASS
pg. 11	<i>Lomatium dissectum</i>	FERNLEAF BUISCUIT ROOT
pg. 11	<i>Lomatium nudicaule</i>	BARESTEM BUISCUIT ROOT
pg. 11	<i>Lupinus bicolor</i>	MINIATURE LUPINE
pg. 11	<i>Lupinus polyphllus</i>	BIG LEAF LUPINE
pg. 12	<i>Lupinus rivularis</i>	RIVERBANK LUPINE
pg. 12	<i>Mimulus guttatus</i>	MONKEY FLOWER
pg. 12	<i>Plagiobothrys figuratus</i>	FRAGRANT POPCORN FLOWER
pg. 12	<i>Plagiobothrys scouleri</i>	SCOULER'S POPCORN FLOWER
pg. 12	<i>Prunella vulgaris var. lanceolata</i>	SELF HEAL
pg. 9	<i>Polygonum pensylvanicum</i>	PENNSYLVANIA SMARTWEED
pg. 9	<i>Sagittaria latifolia</i>	WAPATO
pg. 12	<i>Saxifraga oregana</i>	OREGON SAXIFRAGE
pg. 8	<i>Schoenoplectus acutus</i>	HARDSTEM BULRUSH
pg. 8	<i>Schoenoplectus tabernaemontani</i>	SOFTSTEM BULRUSH
pg. 8	<i>Scirpus microcarpus</i>	SMALL-FRUITED BULRUSH
pg. 12	<i>Sisyrinchium idahoense</i>	BLUE-EYED GRASS
pg. 9	<i>Sparganium emersum</i>	BUR-REED
pg. 12	<i>Tellima grandiflora</i>	FRINGECUPS
pg. 5	<i>Zizania palustris</i>	WILD RICE

Native Seed Mixes

<p style="text-align: center;">BIO SWALE MIX #8</p> <p>This mix is recommended by erosion control specialists and conservationists. Plant 15-25 lbs/acre.</p> <ul style="list-style-type: none"> 15% <i>Beckmannia syzigachne</i> 10% <i>Hordeum brachyantherum</i> 10% <i>Bromus carinatus</i> 10% <i>Elymus glaucus</i> 10% <i>Agrostis exarata</i> 10% <i>Deschampsia cespitosa</i> 10% <i>Festuca romeri</i> 5% <i>Alopecurus aequalis</i> 5% <i>Eleocharis palustris</i> 5% <i>Deschampsia elongata</i> 5% <i>Carex unilateralis</i> 2.5% <i>Juncus tenuis</i> 2.5% <i>Juncus bufonius</i> <p style="text-align: center; color: red;">SPECIAL MIX PRICE \$24.96 /lb</p>	<p style="text-align: center;">NATIVE UPLAND GRASS MIX #9</p> <p>This blend is perfect for the riparian, upland or wet prairie restoration. It creates perfect nesting cover with its mix of grasses, some creeping to fill in and some forming crowns. Plant 15-25 lbs./acre.</p> <ul style="list-style-type: none"> 30% <i>Elymus glaucus</i> 25% <i>Bromus carinatus</i> 10% <i>Hordeum brachyantherum</i> 10% <i>Festuca romeri</i> 10% <i>Deschampsia elongata</i> 5% <i>Agrostis exarata</i> 5% <i>Deschampsia cespitosa</i> 5% <i>Festuca rubra rubra</i> <p style="text-align: center; color: red;">SPECIAL MIX PRICE \$13.95 /lb</p>
<p style="text-align: center;">NATIVE WETLAND GRASS MIX #10 (A SPECIAL MIX THAT ATTRACTS WATERFOWL)</p> <p>This blend of grasses can be submerged for the winter. They will begin to grow as the water recedes in the spring. They all do well in very poor soil and can also stand a droughty summer. As these grassy fields reflood in the fall and winter, ducks feed on the shattered seed and invertebrates. Plant 15-25 lbs/acre.</p> <ul style="list-style-type: none"> 40% <i>Glyceria occidentalis</i> 30% <i>Beckmannia syzigachne</i> 20% <i>Hordeum brachyantherum</i> 10% <i>Alopecurus aequalis</i> <p style="text-align: center; color: red;">SPECIAL MIX PRICE \$15.25 /lb</p>	<p style="text-align: center;">MOIST SOIL SEDGE & RUSH MIX #11</p> <ul style="list-style-type: none"> 70% <i>Carex unilateralis</i> 7% <i>Carex microptera</i> 6% <i>Carex densa</i> 5% <i>Juncus bufonius</i> 5% <i>Juncus effusus</i> 5% <i>Juncus tenuis</i> 2% <i>Carex stipata</i> <p style="text-align: center; color: red;">SPECIAL MIX PRICE \$99.00 /lb</p>
<p>SPECIAL ORDER ONLY</p> <p>Order by late spring / early summer for fall delivery.</p> <ul style="list-style-type: none"> -Oregon Ash Tree Seed \$55.00 /lb -Black Hawthorn Seed \$65.00 /lb -Native Willow Cuttings (12 in) \$ 0.50 /cutting 	
<p style="text-align: center;">NATIVE MOIST SOIL MANAGEMENT MIX #12 For attracting waterfowl.</p> <ul style="list-style-type: none"> 25% <i>Glyceria occidentalis</i> 25% <i>Alisma triviale</i> 15% <i>Polygonum pensylvanicum</i> 10% <i>Beckmannia syzigachne</i> 5% <i>Alopecurus aequalis</i> 5% <i>Eleocharis palustris</i> 5% <i>Hordeum brochyantherum</i> 4% <i>Eleocharis ovata</i> 3% <i>Leersia oryzoides</i> 3% <i>Schoenoplectus tabernaemontani</i> <p style="text-align: center; color: red;">SPECIAL MIX PRICE \$26.75 /lb</p>	

Native Seed Mixes

NATIVE WETLAND MARSH MIX #1

This mix is perfect for seasonal wetlands where water recedes to marshy conditions, spring to summer. Plant 10-15 lbs/acre.

- 60% *Alisma triviale*
- 20% *Glyceria occidentalis*
- 10% *Alopecurus aequalis*
- 5% *Sagittaria latifolia*
- 5% *Leersia oryzoides*

SPECIAL MIX PRICE \$29.95/lb

NATIVE MOIST SOIL FLOWER MIX #2

This mix is perfect for seasonal wetlands where water recedes to marshy conditions, spring to summer. Plant 8-10 lbs/acre.

- 30% *Plagiobothrys figuratus*
- 30% *Polygonum pensylvanicum*
- 15% *Epilobium densiflorum*
- 10% *Camassia leichtlinii*
- 5% *Sagittaria latifolia*
- 5% *Grindelia integrifolia*
- 5% *Downingia elegans*

SPECIAL MIX PRICE \$66.92/lb

NATIVE WETLAND MEDIUM TO SHALLOW WATER MIX #3

This is the ideal mix for spring water depth of 6"-18" that recedes in June to August. Plant 12-18 lbs/acre.

- 30% *Alisma triviale*
- 20% *Beckmannia syzigachne*
- 20% *Eleocharis palustris*
- 15% *Glyceria occidentalis*
- 10% *Alopecurus aequalis*
- 5% *Leersia oryzoides*

SPECIAL MIX PRICE \$36.92/lb

NATIVE WETLAND DEEP WATER MIX #4

This mix is great for deeper water areas. It works well in areas with winter water depth of 3'-4' and summer levels of 6"-12" or even drying in August/September. Plant 10-15 lbs/acre.

- 60% *Alisma triviale*
- 20% *Sparganium emersum*
- 20% *Schoenoplectus tabernaemontani*

SPECIAL MIX PRICE \$49.62/lb

NATIVE FLOWER / POLLINATOR MIX #5

- 30% *Plagiobothrys figuratus*
- 15% *Lupinus rivularis*
- 10% *Clarkia amoena*
- 10% *Eriophyllum lanatum*
- 10% *Polygonum pensylvanicum*
- 5% *Lupinus polyphyllus*
- 5% *Camassia leichtlinii*
- 5% *Prunella vulgaris var. lanceolata*
- 5% *Achillea millefolium*
- 3% *Heracleum maximum*
- 2% *Asclepias speciosa*

SPECIAL MIX PRICE \$69.52/lb

WOODLAND FLOWER MIX #6

This mix of two beautiful native forbs thrives in wet meadows, prairies and partially shaded woodlands and is loved by pollinators. Plant 8-10 lb per acre.

- 70% *Camassia leichtlinii*
- 30% *Tellima grandiflora*

SPECIAL MIX PRICE \$174.52/lb



About River Refuge Seed

Our family's long time passion for waterfowl hunting led us to be avid proponents of wetland conservation. In the 1980's we began to investigate ways to protect and enhance wetlands as well as be a productive farm. Our search led us to an Oregon State University professor who suggested that Oregon had the potential to successfully grow wild rice. We became the first farm to commercially grow wild rice here in the Willamette Valley. By the 1990's a variety of native wetland plants began to volunteer in the ponds and marshy ground of the rice fields and we became aware that, with the increasing interest in wetland restoration, both privately and publicly, there was a market for native wetland seed.

Since then, we have expanded the marshy areas to encompass over 700 acres here in the Mid-Willamette Valley that not only produce many varieties of wetland plants but are home to hundreds of nesting birds and a resting area for thousands of migrating waterfowl. We are pleased to be a family operation that involves our children, grandchildren and even great grandchildren in various aspects of the farm. Many local folk, as well as family members, help during harvest when much of the seed needs to be hand picked.

This year we have available more than 70 species of native wetland seed and a number of native mixes to attract waterfowl. Each year we have increased our selection and sometimes have varieties available that have not yet been listed. If you do not see what you are looking for, please ask. If we do not carry it, we will be happy to recommend something comparable.



The Rogers Family
River Refuge Seed Co
Brownsville, Oregon

Native Grasses

Agrostis exarata

SPIKE BENTGRASS

A native perennial grass found in wet areas but can stand very dry summer conditions. It is good for riparian areas, open savannah or wet prairies. It is a



vigorous grower and strong reseeder! Grows from 8-30 inches. Best planted in fall. 5,600,000 seeds per lb. Plant 2-5 lbs/acre.

\$27.70 /lb

Alopecurus aequalis

SHORTAWN FOXTAIL

Found throughout the United States, this perennial native grass is great for seasonal wetlands as it will withstand long periods of submersion as well as drought.



Waterfowl feed on the seed and forage the rhizome root system for Invertebrates. Grows 5-15 inches. 1,300,000 seeds per lb. Plant 6-8 lbs/acre.

\$25.95 /lb

Beckmannia syzigachne

AMERICAN SLOUGHGRASS

An annual or short lived perennial native grass that is an aggressive reseeder. It is used widely in wetland restorations and as plantings for waterfowl.



Grows to 4 feet. 240,000 seeds per lb. Plant 12-15 lbs/acre.

\$16.50 /lb

Bromus carinatus

CALIFORNIA BROME

A native, short lived perennial grass that also readily reseeds. It is a fast growing upland restoration grass. It adapts well for upland and woodland.



60,000-82,000 seeds per lb. Plant 15-30 lbs/acre.

\$7.90 /lb

Bromus sitchensis

SITKA BROME

Sitka brome is a shade tolerant native that can grow 2 to 5 feet tall. It is a fast growing bunchgrass that is relatively long-lived.



122,000 seeds per lb. Plant 15-30 lbs/acre.

\$9.90 /lb

Danthonia californica

CALIFORNIA OATGRASS

A perennial native grass found in oak savannah to poorly drained riparian areas. It tolerates stresses from wet to drought and produces high crowns which are great for wildlife habitat.



Grows 1-3 feet. Fall plant. Requires 60 days of cold stratification. Generally, sprouts in the spring. 400,000 seeds per lb. Plant 10-20 lbs/acre.

\$46.70 /lb

Native Wetland & Upland Flowers / Forbs

Lupinus rivularis

RIVERBANK LUPINE

The riverbank lupine is a native perennial in the legume family that grows to 3' with blue and white flowers. It will grow in almost any



soil but prefers wet and well drained. 29,000 seeds per lb. Plant 10-12 lbs/acre.

\$34.50 /lb

Mimulus guttatus

MONKEY FLOWER

This native has vibrant yellow blooms and can be either a perennial or annual depending on the climate. It spreads mostly by rhizomes and



does well in both full sun and shade. 45,000,000 seeds per pound.

\$45.00 /oz

Plagiobothrys figuratus

FRAGRANT POPCORN FLOWER

A native annual that begins sprouting as water recedes from wetland and blooms mid-May to early July.

Prefers moist soil and will reseed readily. Grows 4-12 inches. 800,000 seeds per lb. Plant 2-4 lbs/acre.



\$89.50 /lb

Plagiobothrys scouleri

SCOULER'S POPCORN FLOWER

A native annual that begins sprouting as water recedes from wetland and blooms mid-May to early July. Prefers moist soil and will reseed readily.



Grows 1-8 inches. 1,000,000 seeds per lb. Plant 2-4 lbs/acre.

\$86.50 /lb

Prunella vulgaris var. lanceolata

SELF HEAL

A native, fibrous-rooted, perennial that grows from short rhizomes making it ideal for erosion control. It generally stays green all summer without watering



and will flower even when mowed fairly short. 756,000 seeds per lb. Plant 2-4 lbs/acre.

\$69.90 /lb

Saxifraga oregana

OREGON SAXIFRAGE

This native perennial provides an important early season nectar source for many native pollinator species. It can handle waterlogged areas and able to



survive long drought periods during its dormancy. Grows 1 to 3 feet tall.

\$295.00 /lb

Sisyrinchium idahoense

BLUE-EYED GRASS

Unlike the name suggests, this native perennial is part of the iris family. It grows in open woodlands, moist meadows and river banks and



can get up to 18 inches tall. Plant near the surface up to an 1/8 inch deep. 380,000 seeds/lb.

\$205.00 /lb

Tellima grandiflora

FRINGECUPS

A spreading perennial that thrives in shaded areas like moist woods. Competes well against invasive weeds. It grows to about 30" and the flowers



mature to a pinkish red. 7,560,000 seeds per pound.

\$379.00 /lb

Native Wetland & Upland Flowers / Forbs

Epilobium densiflorum DENSE SPIKED PRIMROSE

A native annual that grows from 1-3 feet tall. Grows in wetland areas along pond edges and grows well in heavy soils. 1,200,000 seeds per lb.

Plant 4-6 lbs/acre.



\$62.50 /lb

Eriophyllum lanatum OREGON SUNSHINE

Thrives in the Willamette Valley of Oregon, with its 40" of yearly rain, to the high desert of Eastern Washington, Oregon, Idaho & Northern California.

Very drought resistant. 800,000 seeds/lb. Plant 3 lbs/acre.



\$149.50 /lb

Geum macrophyllum LARGE-LEAF AVENS

This is a native perennial flower that can grow up to 3 feet tall. It does well in moist, shaded areas. 300,000 seeds per lb. Plant 1-2 lbs/acre.



\$139.00 /lb

Grindelia integrifolia PUGET SOUND GUMWEED

A perennial native forb that grows 6-30 inches tall. Leaves are covered with a resinous substance. Grows in wet prairie and early drying vernal pools. Thrives in clay soils. 128,000 seeds per lb. Plant 5 lbs/acre.



\$135.00 /lb

Helianthus annuus SUNFLOWER

Provides feed and cover for doves, quail, and songbirds. Grows well on both sides of the Cascades. Tolerates some frost and is drought resistant.

Fall plant for best results. 240,000 seeds per lb. Plant 10-15 lbs/acre.



\$35.50 /lb

Limited Supply

Lomatium dissectum FERNLEAF BISCUITROOT

A long-lived perennial that grows 2 to 5 feet tall. It is most commonly found on dry, rocky hillsides amongst native grasses. Once it is established, it can tolerate droughty conditions.

Plant 1/8-1/4 inch deep in the fall. 45,000 seeds per lb.



\$130.00 /lb

Lomatium nudicaule BARESTEM BISCUITROOT

This native is an important spring and summer food for livestock and wildlife. It grows well in dry, open habitats and gets up to 2 feet tall.

Requires 60 days of cold-moist stratification. Shallow plant at 1/4 to 1/2 inch in the fall.



\$160.00 /lb

Lupinus bicolor MINIATURE LUPINE

Smaller than most lupines, this native annual only grows to about 6 to 16 inches. It readily reseeds and flowers March through July. This is a good one to include in your wet prairie or upland mixes.

58,000 seeds/lb. Plant 20 lbs/acre.



\$69.50 /lb

Lupinus polyphyllus BIG LEAF LUPINE

The big leaf lupine is a native perennial legume that grows to 4' tall. It will grow in wet prairie to droughty uplands. This is the true native, not the Russells variety.

22,000 seeds per lb. Plant 10-12 lbs/acre.



\$67.50 /lb

Native Grasses

Deschampsia cespitosa TUFTED HAIRGRASS

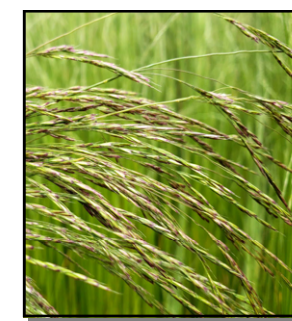
A fine leaved, native perennial grass. It is often used in wetland, riparian and upland restoration. Fall planting is recommended. Benefits from 30 to 60 days of cold stratification to break dormancy. 1,300,000 seeds per lb. Plant 1-5 lbs/acre.



\$17.50 /lb

Deschampsia danthonioides ANNUAL HAIRGRASS

This is a quick low growing, native annual grass that can be used as a ground cover in restoration projects. There is no seed dormancy and germinates readily on moist soil. 900,000 seeds per lb. Plant 2-7 lbs/acre.



\$12.50 /lb

Deschampsia elongata SLENDER HAIRGRASS

A fine leaved native, short lived perennial grass. It is also a good reseeder. Grows well in combination with all upland grasses. 2,300,000 seeds per lb. Plant 2-7 lbs/acre.



\$11.75 /lb

Elymus glaucus BLUE WILDRYE

A native short lived perennial grass. It is a fast growing, drought tolerant upland species that is often used as a matrix in grass mixes for restoration. 134,000 seeds per lb. Plant 15-30 lbs/acre.



\$11.25 /lb

Festuca roemerii ROEMER'S FESCUE

A native perennial grass. It works well for upland restorations. It is a fine leaved bunch grass that is drought tolerant. 500,000 seeds per lb. Plant 5-8 lbs/acre.



\$26.75 /lb

Festuca rubra rubra RED FESCUE

A fine leaved, creeping native perennial grass. An excellent choice to be included in upland restoration mixes. 245,000 seeds per lb. Plant 5-8 lbs/acre.



\$9.75 /lb

Native Grasses

Glyceria occidentalis

WESTERN MANNAGRASS

A native perennial that grows best in shallow water that is either seasonal or year round. It produces an abundance of seed consumed by waterfowl. The



vegetation is also grazed by mammals. Grows 1-3 feet. Shallow plant. 125,000 seeds per lb. Plant 15-20 lbs/acre. *** According to the USDA this species is native to the lower 48 states of the USA. ***

\$17.50/lb

Hordeum brachyantherum

MEADOW BARLEY

A native perennial grass that grows well in a wetland, wet prairie or riparian environment. It is a bunchgrass that will tolerate total inundation for months and grow



vigorously as water recedes. It will also tolerate some alkalinity. This seed is a must for most wetland restoration. 100,000 seeds per lb. Plant 15-30 lbs/acre.

\$17.65/lb

Leersia oryzoides

RICE CUTGRASS

A perennial emergent grass that grows well in seasonally flooded or permanent shallow ponds. Works well for soil stabilization. The seeds are eaten by waterfowl and the roots by wetland mam-



mals. Grows 3-5 feet. 500,000 seeds per lb. Plant 6-8 lbs/acre.

\$145.00/lb

Zizania palustris

WILD RICE



Wild Rice is a **native** aquatic grass that grows in water 8-36" deep. It readily reseeds itself. It can mature in permanently flooded ponds or seasonal wetlands, provided there is water into July. Plant 50-100 lbs/acre.

*** According to the USDA this species is native to the lower 48 states of the USA. ***

Spring \$6.95/lb

Fall \$6.25/lb

For prices with shipping included, call us at 541-466-5309 or visit our website www.RiverRefugeSeed.com/wildrice-pricing

Native Grass Mixes

(See page 14 for more details)

- **BIO SWALE MIX #8**
- **NATIVE UPLAND GRASS MIX #9**
- **NATIVE WETLAND GRASS MIX #10**

Native Wetland & Upland Flowers / Forbs

Achillea millefolium

COMMON YARROW

A native perennial herb that spreads aggressively by rhizomes and self-seeding. It prefers dry or moist soil that is well drained and can tolerate drought.



Grows up to 2 feet tall. 2,800,000 seeds per lb. Plant 1-2 lbs/acre.

\$47.90/lb

Asclepias speciosa

SHOWY MILKWEED

Showy milkweed is a native perennial forb and is very important to the Monarch butterfly. They cannot survive without it because their larvae will only feed on milkweed plants. 102,000 seeds per lb. Plant 7-12 lbs/acre.



\$249.00/lb

Camassia leichtlinii

LARGE CAMAS

A perennial native forb that thrives in wet meadows and prairies and grows easily from seed. The striking blue flowers appear annually April-June in



the second or third year after planting. Grows 24-48 inches. Best planted in late fall. Seed requires 60 days of cold. 20,000 seeds per lb. Plant 12-15 lbs/acre.

\$99.50/lb

Camassia quamash

SMALL CAMAS

A perennial native forb that thrives in wet meadows and prairies and grows easily from seed. The striking blue flowers appear annually between April and June



in the second or third year after planting. Grows 8-23 inches. Best planted in late fall. Seed requires 60 days of cold. 20,000 seeds per lb. Plant 12-15 lbs/acre.

\$149.50/lb

Clarkia amoena

FAREWELL TO SPRING

A native annual that grows from 6"-30" and readily reseeds year after year. The soil can be very wet during winter but be mostly dry during the growing



season. 900,000 seeds per lb. Plant 2 lbs/acre.

\$63.90/lb

Downingia elegans

ELEGANT CALICOFLOWER

A low growing native annual forb. Common to vernal ponds. It blooms from June to August as water recedes. 1,900,000 seeds per lb. Plant 1 lb/acre.



\$190.00/lb

Native Wetland & Upland Flowers / Forbs

Alisma triviale

AMERICAN WATER PLANTAIN

A perennial native emergent that grows in both shallow and deep marshes. It is often used in wetland restorations. Waterfowl readily feed on the seeds and plants. Best planted in fall. Seed requires 60 days of cold. 400,000 seeds per lb. Plant 15 lbs/acre.



\$19.90 /lb

Chenopodium album

LAMBSQUARTERS / FAT HEN

An annual of the goosefoot family. It grows in riparian and transitional areas and produces tens of thousands of seeds per plant that are enjoyed by upland birds and song birds. Grows 1-4 feet. 700,000 seeds per lb. Plant 10-12 lbs/acre.



\$9.80 /lb

*** According to the USDA this species is native to the lower 48 states of the USA. ***

Heracleum maximum

COW PARSNIP

A native biennial or short-lived perennial that grows up to 8 feet tall. It has a high fire tolerance and is a good source of pollen for bees and insects. Also a good forage species for larger animals. It grows best in moist areas. 48,000 seeds per lb. Plant 1-2 lbs/acre.



\$89.50 /lb

Polygonum pensylvanicum

PENNSYLVANIA SMARTWEED

A native, reseeding annual that grows in a few inches of water and thrives in areas where water recedes in late spring. Best planted in fall. 62,000 seeds per lb. Plant 15-20 lbs/acre.



\$17.10 /lb

*** According to the USDA this species is native to the lower 48 states of the USA. ***

ASK ABOUT OUR QUANTITY DISCOUNT PRICES

Sagittaria latifolia

WAPATO OR ARROWHEAD

These tubers grow quickly and spread rapidly in wet marshes and shallow ponds. Will sprout in up to 12 inches of water. Waterfowl devour the seed head, foliage and tubers. A little seed goes a long way! Grows 2-3 feet. Best planted in fall. Seed requires 60 days of cold. 1,000,000 seeds per lb. Plant 2-4 lbs/acre.



\$124.50 /lb

Sparganium emersum

BUR-REED

A perennial native emergent that grows well in seasonally or permanently flooded areas. Ducks love the seed. The entire plant is a favorite of deer, geese and muskrats. Grows 8-20 inches. Needs cold-warm-cold-warm stratification to sprout. Due to a complicated stratification it may not sprout until 2nd or 3rd year. Usually added to mixes. 23,000 seeds per lb.



\$125.50 /lb

Native Sedges

Carex densa

DENSE SEDGE

A native perennial grass-like sedge that grows in moist low grounds and produces an abundance of seeds. Both seeds and plant are consumed by wildlife. 2,000,000 seeds per lb. Plant 6-8 lbs per acre. Sow on or near the surface. Seed requires 60 days of cold. Best planted in fall.



\$160.00 /lb

Carex feta

GREENSHEATH SEDGE

A grass-like perennial native. Used in restoring habitat in wet prairies, marshes and ditch banks. Stems are coarse arising from dense clumps. Usually seeded in mixes, adding 1/4-3 lbs per acre. 2,000,000 seeds per lb. Sow on or near the surface. Seed requires 60 days of cold. Best planted in fall.



\$195.00 /lb

Carex microptera

SMALLWING SEDGE

A native perennial commonly found in wet prairie meadows and along streams. Usually seeded in mixes, adding 1/4-3 lbs per acre. Grows 1 to 3 feet. 2,000,000 seeds per lb. Sow on or near the surface. Seed requires 60 days of cold. Best planted in fall.



\$160.00 /lb

Carex rostrata

BEAKED SEDGE

With its rhizomatous root system, this grass-like native is great at forming sod, making it useful for wetland and riparian restoration. It can be found growing in swamps, marshes and the edges of streams and ponds. Grows 1 to 4 feet tall. Plant 1/4 to 1/2 inch deep at 7 lbs per acre. 450,000 seeds per lb.



\$165.00 /lb

Carex stipata

AWL FRUITED SEDGE

A native perennial grass-like sedge usually found at the edge of streams, ponds, sloughs or in seasonal wetlands. Usually seeded in mixes, adding 1/4-3 lbs per acre. Grows 1 to 3 feet. 2,000,000 seeds per lb. Sow on or near the surface. Seed requires 60 days of cold. Best planted in fall.



\$175.00 /lb

Carex unilateralis

ONE-SIDED SEDGE / LATERAL SEDGE

A native perennial found in saturated fields and meadows. Usually seeded in mixes, adding 1/4-3 lbs per acre. Grows 1-2 feet. 2,000,000 seeds per lb. Sow on or near the surface. Seed requires 60 days of cold. Best planted in fall.



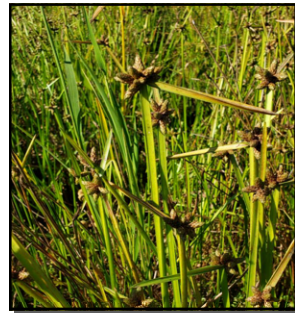
\$109.00 /lb

Native Rushes

Bolboschoenus maritimus

ALKALI BULRUSH

A native perennial, that can tolerate periods of drought and total inundation. It forms large dense stands in alkaline or saline sites, handling a pH of up to 9.0 but can also grow in fresh water sites. 170,000 seeds per lb. Plant 6-8 lbs/acre.



\$29.50 /lb

Eleocharis ovata

OVATE SPIKERUSH

A grass-like, annual native. Used in restoration or development of wet prairies and meadows. Usually seeded in mixes, adding 1/4-3 lbs/acre. 2,000,000 seeds per lb. Sow on or near the surface. Seed requires 60 days of cold. Best planted in fall.

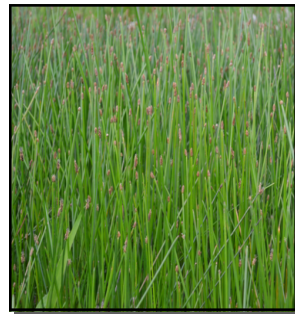


\$99.50 /lb

Eleocharis palustris

CREEPING SPIKERUSH / COMMON SPIKERUSH

A perennial native rush. Waterfowl eat both seeds and spikes. A mainstay of the western marsh; it readily spreads. Grows 6-24 inches. Best planted in fall. Seed requires 60 days of cold. 800,000 seeds per lb. Plant 6-8 lbs/acre.

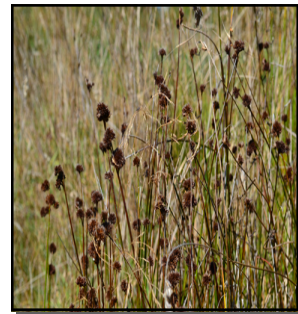


\$95.50 /lb

Juncus bolanderi

BOLANDER'S RUSH

A native perennial that inhabits the shallow water of stream edges and standing water in ponds. Usually seeded in mixes, adding 1/4-3 lbs per acre. Grows 8-24 inches. Best planted in fall. Seed requires 60 days of cold. Sow near or on the surface. 2,000,000 seeds per lb. Plant 3-6 lbs/acre.



\$199.00 /lb

Juncus bufonius

TOAD RUSH

A grass-like, annual native that grows 2-12 inches. Grows June through August. Planted in a mix with perennials, it gives showy first year growth. Because it dies back early, it doesn't outcompete them. 45,000,000 seeds per lb. Plant 1-2 lbs/acre.



\$130.00 /lb

Juncus effusus

COMMON RUSH

A grass-like, perennial native that grows 8-40 inches tall. Grows well in standing water, wet prairies and meadows. An essential component of wetland restoration, the clumpy growth is great for wildlife habitat. 18,000,000 seeds per lb. Plant 1-2 lbs/acre.



\$134.00 /lb

Native Rushes

Juncus ensifolius

DAGGER LEAF RUSH / SWORDLEAF RUSH

A native perennial that prefers wet areas. Usually seeded in mixes, adding 1/4-3 lbs per acre. Grows 8-24 inches. Best planted in fall. Sow near or on the surface. 2,000,000 seeds per lb. Plant 3-6 lbs/acre.



\$199.00 /lb

Juncus oxymeris

POINTED RUSH

This native perennial has iris-like leaves and spreads by underground rhizomes. It grows in wet areas and can get up to 2 feet tall. Usually seeded in mixes, adding 1/4-3 lbs/acre. Best planted in fall. Seed requires 60 days of cold. Sow near or on the surface.



\$195.00 /lb

Juncus tenuis

SLENDER RUSH

A grass-like, perennial native, used in restoration or development of wet prairies and meadows. Usually seeded in mixes, adding 1/4-3 lbs/acre. Best planted in fall. Seed requires 60 days of cold. Sow near or on the surface. 20,000,000 seeds per lb. Plant 1-2 lbs/acre.



\$124.50 /lb

Schoenoplectus acutus

HARDSTEM BULRUSH (SCIRPUS ACUTUS)

A native perennial that is often found in standing water. Grows 3 to 10 feet tall. It provides cover for numerous birds and mammals. Seed requires 60 days of cold. Sow near or on the surface. 400,000 seeds per lb. Plant 6-8 lbs/acre.



\$89.50 /lb

Schoenoplectus tabernaemontani

SOFTSTEM BULRUSH (SCIRPUS VALIDUS)

A native perennial rush that likes to grow at the water's edge and in shallow bays. It provides important nesting cover and produces an abundance of seed favored by waterfowl and shorebirds. Grows 3 to 8 feet. Best planted in fall. Seed requires 60 days of cold. 550,000 seeds per lb. Plant 6-8 lbs/acre.



\$79.50 /lb

Scirpus microcarpus

SMALL FRUITED BULRUSH

A native perennial that grows in marshes, along streams, or in standing water. Supplies good feed for ducks and geese. Grows 2-4 feet. Best planted in fall. Seed requires 60 days of cold. Sow near or on the surface. 1,200,000 seeds per lb. Plant 2-4 lbs/acre.



\$135.00 /lb